

# CAMBRIA COUNTY

## RETIREMENT FUND

### FINANCIAL STATEMENT



December 31, 2019  
21st Annual Edition

# Cambria County Retirement Board

May 2020

Once again it is our pleasure to present the summary of the Cambria County Employee Retirement Fund results for 2019. As we write this the world is in the middle of the 2020 Pandemic crisis and the markets are very volatile. However, with that being said, 2019 ended up seeing our Pension Fund reach a new high at year end, not only in value of assets but also in the number of retirees. With assets over \$212 million and retirees at 1,123 your Fund is functioning well.

Your Cambria County Employees' Retirement Fund continues to remain one of the top Funds in the State. The entire Board of Trustees are very diligent in our commitment to the Fund's progress as we provide the retirement security that you expect. The County Commissioners continue to fulfill their funding commitment from County Funds to maintain our solid performance ranking.

In conclusion, I report to you that on behalf of the Board, we will continue to keep operating costs low and fund performance as high as possible without undue risk taking.

Thank you for your support and confidence in our efforts and retaining us in last year's election process. God bless you and your families.

Sincerely,

***Cambria County Retirement Board of Trustees***

---

## ACTIVE PLAN MEMBERS

Check out what is available on the Cambria County Website under the Retirement Board tab  
[www.cambriacountypa.gov](http://www.cambriacountypa.gov)

---

### CAMBRIA COUNTY EMPLOYEE RETIREMENT PRESENTATION



frequently  
asked questions

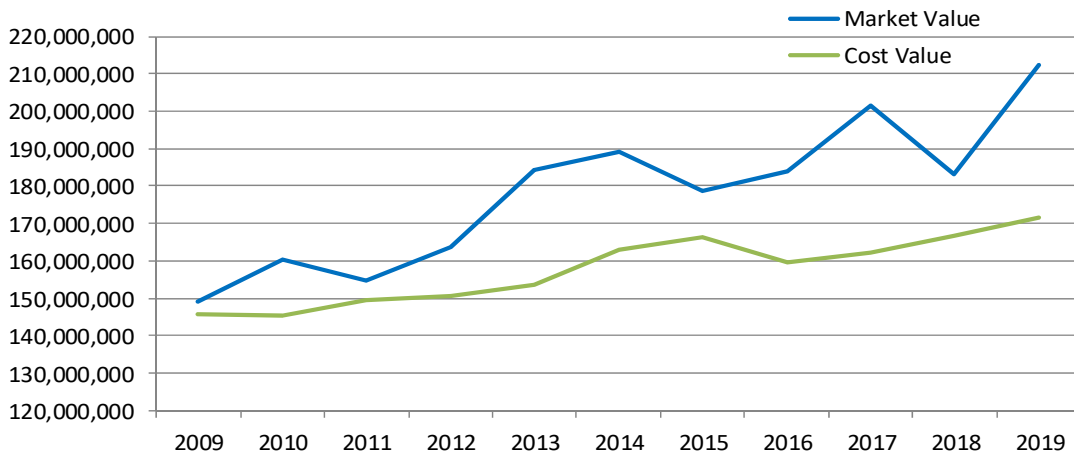


**CAMBRIA COUNTY**

**Statement of Plan Assets As Of December 31, 2019**

<u>Assets</u>	<u>Cost Value</u>	<u>Market Value</u>
Cash and Short Term Investments	\$ 4,299,624	\$ 4,299,624
Receivables	318,631	318,631
Investments:		
U.S. Government Obligations	23,571,231	24,031,589
Domestic Corporate Bonds	23,730,600	24,307,776
Fixed Income Mutual Funds	1,721,983	1,725,201
High Yield Fixed Income	6,431,708	6,412,589
Domestic Equities	29,787,087	37,297,644
International Equities	17,387,612	18,976,477
Domestic Mutual Funds	34,544,762	62,160,784
Emerging Markets	3,343,883	3,196,989
High Yield Limited Partnership	10,662,069	13,260,921
Limited Partnership Debt Fund	5,701,334	6,081,832
Core Real Estate	10,000,000	10,355,824
 Total Assets December 31, 2019	 \$ <u>171,500,524</u>	 \$ <u>212,425,881</u>

**Asset Valuation - Market vs Cost Basis**



Dear Cambria County Retirees

I am pleased to present to you the County Retirement Fund financials in the next few pages. While the number of Retirees has grown again in 2019 your Board and my staff in particular has monitored the funds' assets and the performance of those assets to insure that your fund is solvent, not only now but for the foreseeable future. The Fund reached an all-time high of over \$200,000,000 while we consistently served over 1,120 Retirees with their monthly benefits.

As always the Board and my staff are regularly looking at new investments to help your Fund grow without taking any undue risk. We enjoy communicating with the Retirees whether in our office, on the phone or at Retiree meetings. I encourage all of you to become a member of your local Retiree Association as they keep up to date on all matters concerning your Retirement Fund and your payments. You may contact the Association via email: President - Darcy Regala (darcy.regala@comcast.net)

We are proud to recognize retiree Neoma Hoppell who reached 100 years young in 2019. We wish her continued good health and happiness!!

We all thank you again for the faith you have in us and for the effort we put forward to take care of your needs and benefits. May God bless you and your families!

Yours Truly,

**Ed Cernic, Jr.**

Controller

Retirement Board Secretary

**Kristine A. Segear, CPA**

1st Deputy Controller

Senior Accounting Manager

**Dana Descavish**

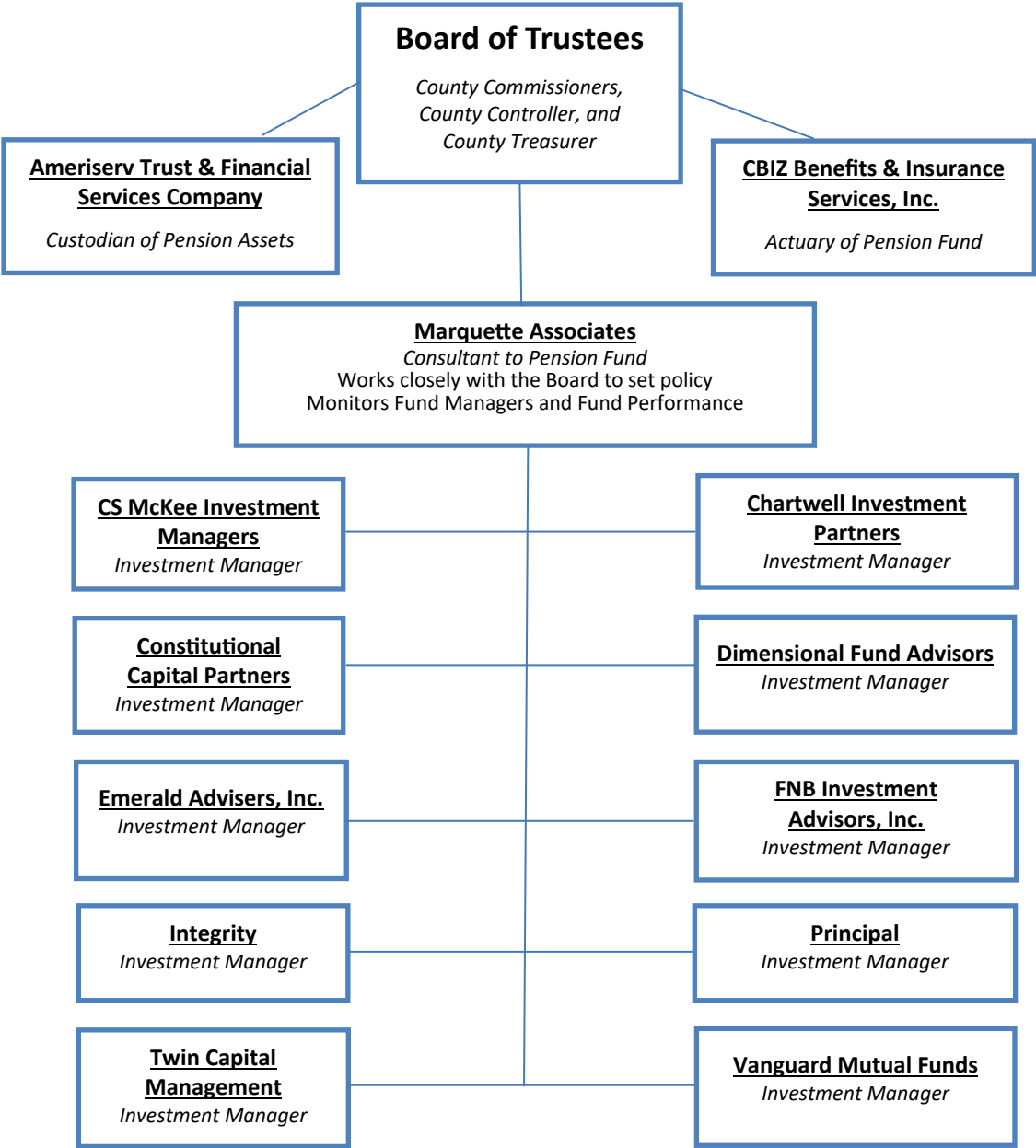
2<sup>nd</sup> Deputy Controller

Pension Benefits Health Care

Administrator



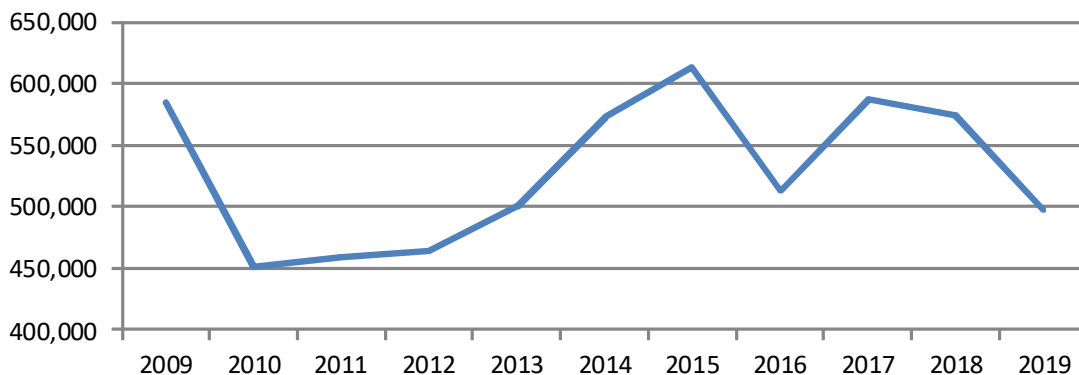
# Structure of the Plan Management



**CAMBRIA COUNTY RETIREMENT FUND  
COMPARISON OF MARKET VALUE BY FUND TO MANAGEMENT FEES**

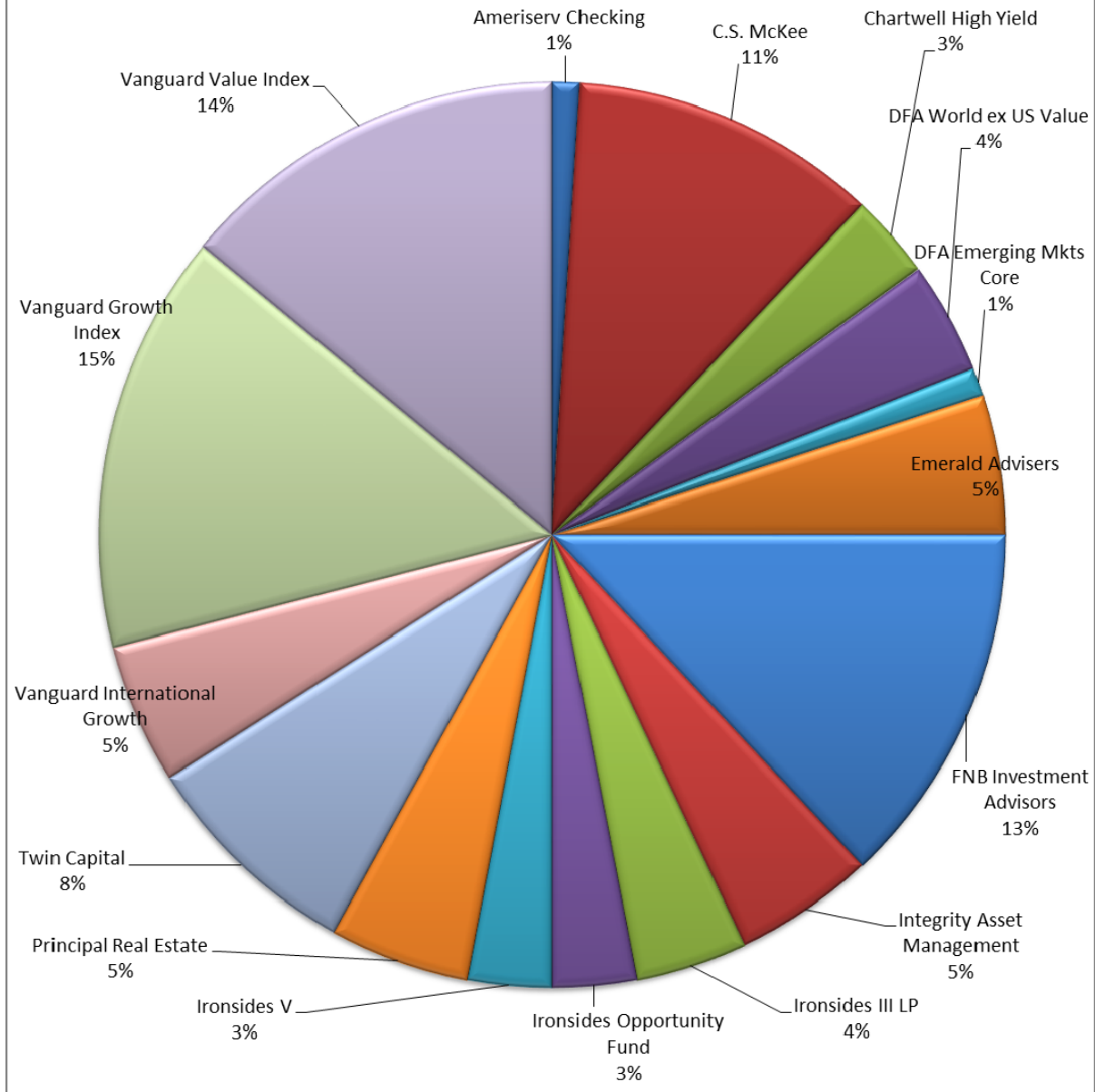
	<b>12/31/19 Market Value</b>	<b>Annual Fees</b>	<b>Approx. Fees on Mutual Funds</b>	<b>Total Fees</b>
Ameriserv Checking	3,420,800			0
C.S. McKee	22,901,991	56,580		56,580
Chartwell High Yield	6,412,589		32,063	32,063
DFA World ex US Value	9,167,671		47,672	47,672
DFA Emerging Mkts Core	3,196,989		16,944	16,944
Emerald Advisers	11,003,545	68,550		68,550
FNB Investment Advisors	27,892,057	40,968	422	41,390
Integrity Asset Management	10,384,914	95,279		95,279
Ironsides III (Constitutional Capital)	7,792,729		68,261	68,261
Ironsides Opportunity Fund	6,081,832		44,695	44,695
Ironsides V Fund	5,468,191		53,868	53,868
Miller Howard	closed 1/2019	1,658		
Principal Real Estate	10,355,824		103,558	103,558
Twin Capital	16,377,159	51,881		51,881
Vanguard International Growth	9,808,806		31,388	31,388
Vanguard Growth Index	31,545,305		12,618	12,618
Vanguard Value Index	30,615,479		12,246	12,246
Ameriserv Trust (Custodian)		79,829		79,829
CBIZ (Actuary)		23,040		23,040
Marquette Associates		80,000		80,000
	<b>212,425,881</b>	<b>497,785</b>	<b>423,735</b>	<b>919,862</b>

**Investment Management Fees Paid by Year \***



\* Chart does not include approximate Mutual Fund Fees

**CAMBRIA COUNTY RETIREMENT PLAN PORTFOLIO  
AS OF 12/31/19  
(% OF PORTFOLIO BY MANAGER)**



**CAMBRIA COUNTY**  
**Employees' Retirement Fund 2019 Financial Report**  
**Statement of Changes in Plan Net Assets For The Year Ended December 31, 2019**

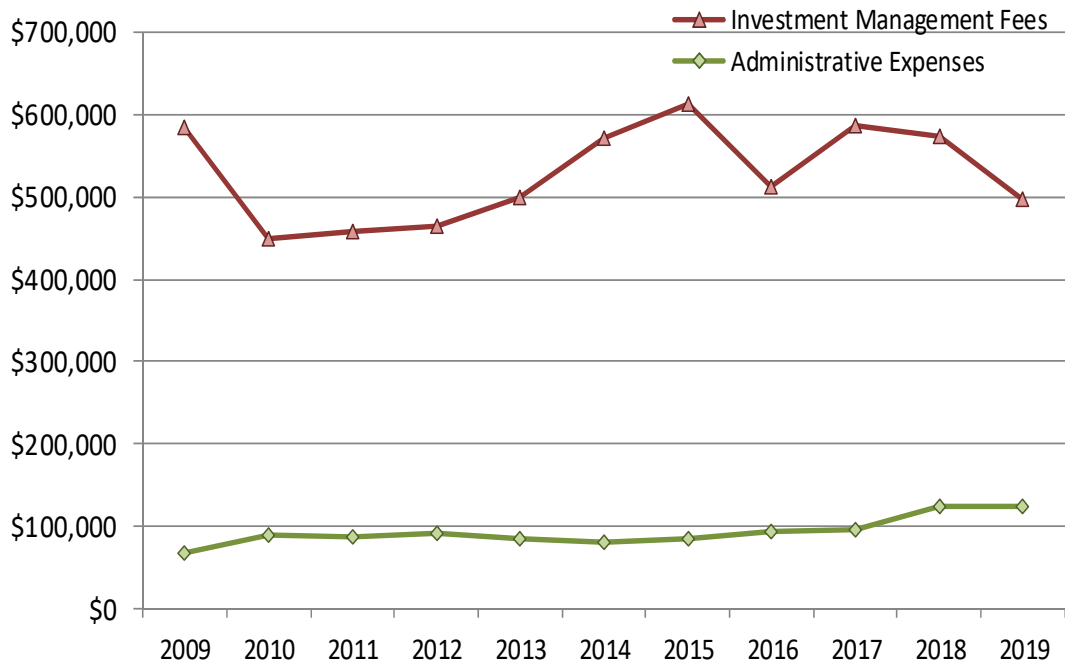
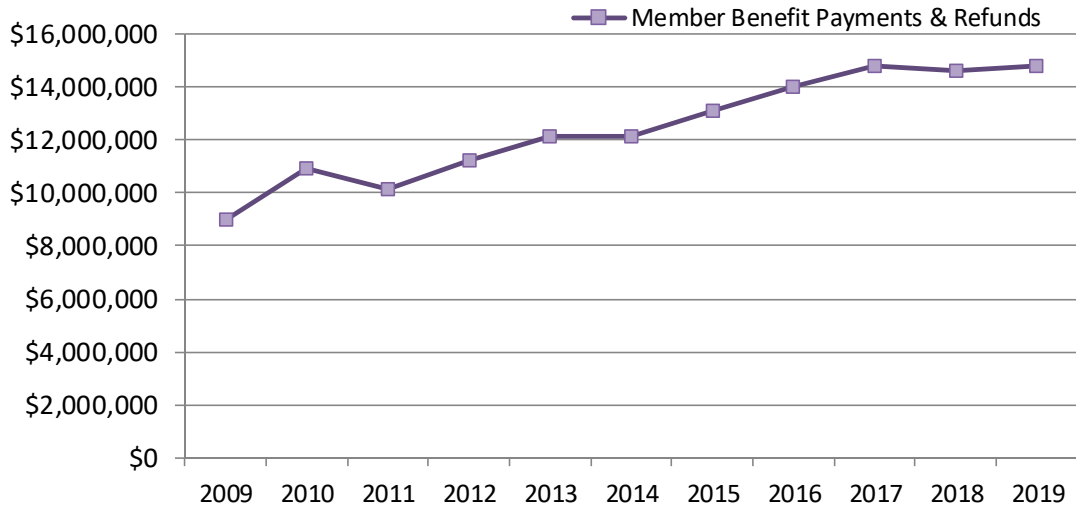
---

Total Assets (cost value) January 1, 2019	\$ <u>166,744,118</u>
<b><u>Additions/Income</u></b>	
Member Contributions (including member share of military or leave of absence buyback)	2,925,550
Member purchase of County share of military or leave of absence	0
County Contributions	2,902,207
Investment Income:	
Interest	1,160,336
Dividends	2,423,727
Realized Capital Gains	10,436,232
Net Accrued Interest/other	318,631
Miscellaneous	<u>0</u>
<b>Total Additions</b>	<b>+\$ <u>20,166,683</u></b>
<b><u>Deductions / Expenses</u></b>	
Member Contributions Refunded	485,374
Retirement allowances paid (includes C-O-L and accumulated deductions withdrawn under Option 4)	14,204,973
Death Benefits	136,622
Administrative Expenses	124,021
Investment expenses	497,784 **
Miscellaneous	0
Change in Accounts Payable	<u>(38,497)</u>
<b>Total Deductions</b>	<b>-\$ <u>15,410,277</u></b>
 <b><u>Net Increase</u></b>	 <b>\$ <u>4,756,406</u></b>
Total Assets (cost value) December 31, 2019	\$ <u>171,500,524</u>
Unrealized appreciation/depreciation	<u>40,925,357</u>
Total Assets (market value) December 31, 2019	\$ <u>212,425,881</u>

**\*\* See Page 6 - Investment Expense Detail for a Breakdown of Investment Expense**



## Comparison of Annual Expenses

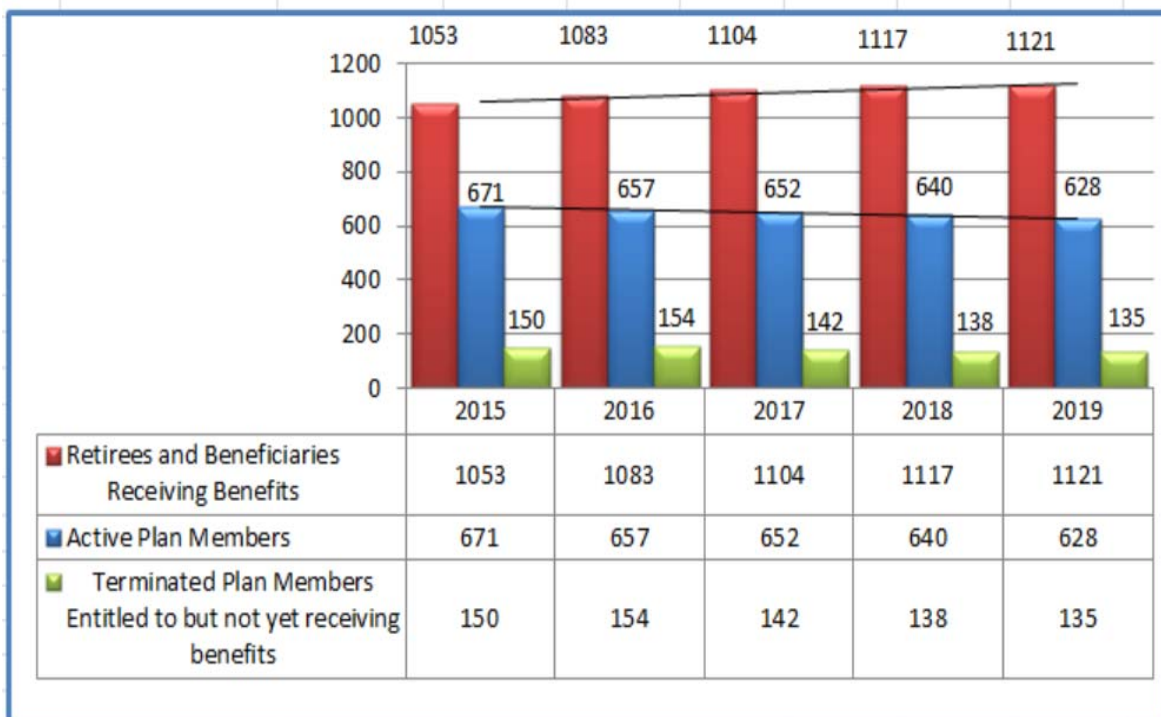


## ACTIVE PLAN MEMBERS vs. ACTIVE RETIREES & VESTED MEMBERS

This graph represents the Active Plan members vs. the Active Retirees. Over the past five years, the number of retirees receiving benefits from the retirement plan has grown and is larger than the number of active plan members contributing to the retirement plan.

As of December 31, 2019, there were 1,884 plan members: 1,121 Retirees and Beneficiaries receiving benefits; 135 Terminated Plan Members entitled to but not yet receiving benefits; and 628 Active Plan Members.

This graph also represents the number of terminated plan members who are entitled to receive benefits in the future. These terminated plan members represent employees who were terminated and are entitled to an involuntary pension or members who were entitled to vest upon leaving County employment. A complete report of the Employee Retirement Trust Plan is available on the County's website ([www.cambriacountypa.gov](http://www.cambriacountypa.gov)) under the Retirement Board area or by contacting the Controller's Office.





## **2019 CAMBRIA COUNTY RETIREES**

Randall Baker	Richard Glosky	Margaret Ropp
Constance Bono	Jane Hagerich	Lisa Schrift
Kathy Briggs	Ralph Hansen	Charles Segada
Nancy Brizzi	Tammy Kirsch	Bernadette Sheehan
Deborah Chislow	Roberta Kulish	Brenda Shevock
Patricia Choros	Judith Laverick	Tammy Sinclair
Kim Crowe	Mary Leyo	Gregory Smith
Todd Crowe	Kathie Lushko	Lisa Stager
Kathleen Daley	Janet Makin	Linda Ann Stiles Toy
Angela Davis	Rosanne Menjivar	Gregory Town
Mark Dixon	Todd Miller	Lawrence Waksmunski
Andrew Fatula	Jack Myers	Elaine Weber
Sandra Georg		Mary Wilkinson

**You've started a new journey and exceptional chapter of your life! May your days be filled with elation and triumph. We THANK YOU for your service to the County!**

**Congratulations on your RETIREMENT!!!**

**2019 CAMBRIA COUNTY RETIREMENT BOARD MEMBERS**



Thomas C. Chernisky, Chairman  
President Commissioner



William "B.J." Smith, Vice-Chairman  
County Commissioner



Mark J. Wissinger, Trustee  
County Commissioner



Lisa M. Kozorosky, Trustee  
County Treasurer



Ed Cernic Jr., Secretary  
County Controller

Report prepared by the staff of the Cambria County Controller's Office and printed in-house. Please forward any suggestions or comments to Ed Cernic, Jr., Cambria County Controller, 200 South Center St, Ebensburg, PA 15931, by phone at (814) 472-1620, or by e-mail to [d-descavish@co.cambria.pa.us](mailto:d-descavish@co.cambria.pa.us)