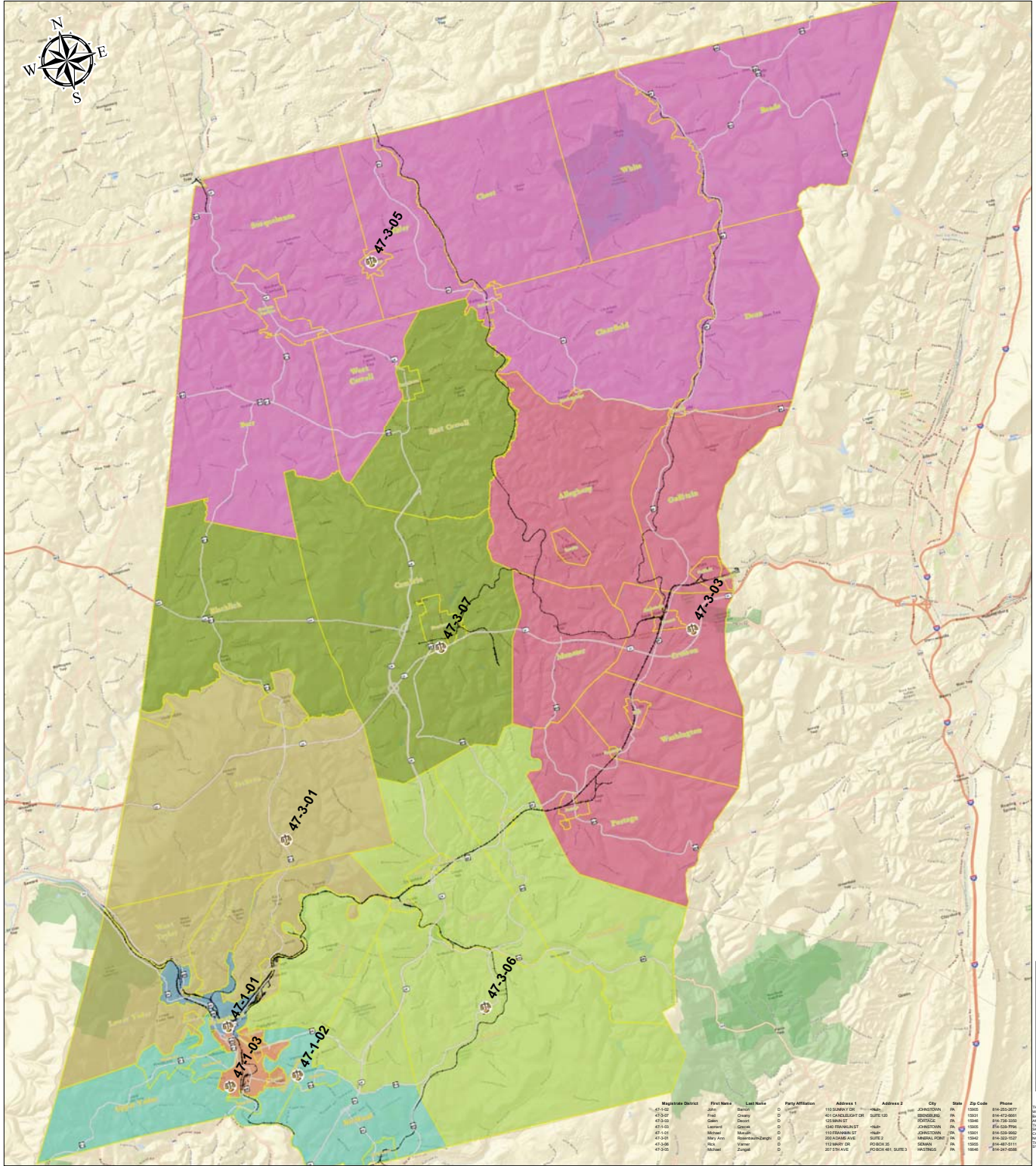


DISTRICT  
MAGISTRATES  
OF  
CAMBRIA COUNTY  
PENNSYLVANIA



Legend

- Magistrate Locations
- ROUTENO**
- MAJOR ROAD
- Railroad
- Municipal Boundaries
- 47-1-01
- 47-1-02
- 47-1-03
- 47-2-01
- 47-3-01
- 47-3-02
- 47-3-03
- 47-3-04
- 47-3-05
- 47-3-06
- 47-3-07



Map Prepared On: Jan. 27, 2012

This map is prepared for the representation of district magistrates within Cambria County. The colors and information provided are for informational purposes only. The county and the magistrates do not warrant the accuracy of this map and shall not be held responsible for any errors or omissions. The county and the magistrates do not warrant the accuracy of this map and shall not be held responsible for any errors or omissions. The county and the magistrates do not warrant the accuracy of this map and shall not be held responsible for any errors or omissions.

District	First Name	Last Name	Party Affiliation	Address 1	Address 2	City	State	Zip Code	Phone
47-1-01	John	Deaton	D	110 SHERMAN DR		JOHNSTON	PA	15505	814-255-2677
47-1-02	Paul	Cherry	D	401 CARROLL DR		JOHNSTON	PA	15501	814-477-8561
47-1-03	Sam	Deaton	D	623 MAIN ST		PORTFOLIO	PA	15546	814-736-3330
47-2-01	Robert	Spitzer	D	106 FRENCHMIST		JOHNSTON	PA	15505	814-329-7594
47-3-01	Robert	Mullin	D	110 FRENCHMIST		JOHNSTON	PA	15505	814-336-5932
47-3-02	Willy Ann	Henderson-Zhang	D	282 SHERMAN ST		MERRILL PARK	PA	15502	814-322-5237
47-3-03	Wesley	Warner	D	112 MAPLE DR	PO BOX 491	SEMAN	PA	15505	814-487-2111
47-3-04	Michael	Zwargel	D	227 SHAWNEE	PO BOX 491, SUITE 3	WATKINS	PA	15544	814-247-6588

1 inch = 6,000 feet