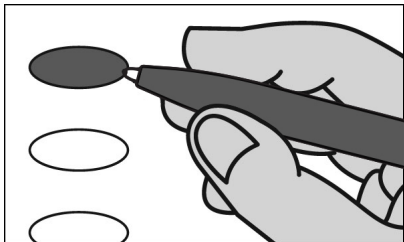


**JOHNSTOWN - SEVENTEENTH WARD NO.2**

**OFFICIAL GENERAL ELECTION BALLOT  
CAMBRIA COUNTY  
NOVEMBER 8TH 2022**



**INSTRUCTIONS TO VOTER**

1. TO VOTE YOU MUST BLACKEN THE OVAL (●) TO THE LEFT OF YOUR CHOICE COMPLETELY. An oval (●) blackened to the left of the name of any candidate indicates a vote for that candidate.
2. To cast a write-in vote for a person whose name is not on the ballot, you must blacken the oval (●) to the left of the line provided, and write the name in the black space provided for that purpose.
3. Mark ballot only in black or blue ink. Use the same pen for all markings you place on the ballot.
4. If you make a mistake DO NOT ERASE OR CROSS OUT. Ask for a new ballot.

**GOVERNOR AND LIEUTENANT GOVERNOR  
GOVERNOR  
4 YEAR TERM**

VOTE FOR THE CANDIDATES OF ONE PARTY FOR GOVERNOR AND LIEUTENANT GOVERNOR

- JOSH SHAPIRO**  
GOVERNOR  
**AUSTIN DAVIS**  
LIEUTENANT GOVERNOR  
DEMOCRATIC
- DOUGLAS V. MASTRIANO**  
GOVERNOR  
**CARRIE LEWIS DELROSSO**  
LIEUTENANT GOVERNOR  
REPUBLICAN
- MATT HACKENBURG**  
GOVERNOR  
**TIM MCMASTER**  
LIEUTENANT GOVERNOR  
LIBERTARIAN
- CHRISTINA DIGIULIO**  
GOVERNOR  
**MICHAEL BAGDOLINO**  
LIEUTENANT GOVERNOR  
GREEN PARTY
- JOE SOLOS**  
GOVERNOR  
**NICOLE WELTZ**  
LIEUTENANT GOVERNOR  
KEYSTONE

**UNITED STATES SENATOR  
6 YEAR TERM  
VOTE FOR ONE**

- JOHN FETTERMAN**  
DEMOCRATIC
- MEHMET OZ**  
REPUBLICAN
- ERIK GERHARDT**  
LIBERTARIAN
- RICHARD L. WEISS**  
GREEN PARTY
- DANIEL WASSMER**  
KEYSTONE

Write-in

**REPRESENTATIVE IN CONGRESS  
13<sup>TH</sup> DISTRICT  
2 YEAR TERM  
VOTE FOR ONE**

**JOHN JOYCE**  
REPUBLICAN

Write-in

**REPRESENTATIVE IN THE GENERAL ASSEMBLY  
72ND DISTRICT  
2 YEAR TERM  
VOTE FOR ONE**

- FRANK BURNS**  
DEMOCRATIC
- RENAE BILLOW**  
REPUBLICAN

Write-in

**CAMBRIA COUNTY BOARD OF ELECTIONS**

Cambria County Board of Elections

*[Signature]*  
*[Signature]*  
*[Signature]*

**WARNING:** If you receive an absentee or mail-in ballot and return your voted ballot by the deadline, you may not vote at your polling place on election day. If you are unable to return your voted absentee or mail-in ballot by the deadline, you may only vote a provisional ballot at your polling place on election day, unless you surrender your absentee or mail-in ballot and envelope to the judge of elections to be voided to vote by regular ballot.