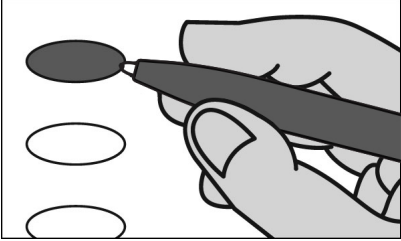


LILLY BOROUGH 1ST WARD

OFFICIAL GENERAL ELECTION BALLOT
CAMBRIA COUNTY
NOVEMBER 8TH 2022



INSTRUCTIONS TO VOTER

1. TO VOTE YOU MUST BLACKEN THE OVAL (●) TO THE LEFT OF YOUR CHOICE COMPLETELY. An oval (●) blackened to the left of the name of any candidate indicates a vote for that candidate.
2. To cast a write-in vote for a person whose name is not on the ballot, you must blacken the oval (●) to the left of the line provided, and write the name in the black space provided for that purpose.
3. Mark ballot only in black or blue ink. Use the same pen for all markings you place on the ballot.
4. If you make a mistake DO NOT ERASE OR CROSS OUT. Ask for a new ballot.

GOVERNOR AND LIEUTENANT GOVERNOR
4 YEAR TERM

VOTE FOR THE CANDIDATES OF ONE PARTY FOR GOVERNOR AND LIEUTENANT GOVERNOR

- JOSH SHAPIRO**
GOVERNOR
AUSTIN DAVIS
LIEUTENANT GOVERNOR
DEMOCRATIC
- DOUGLAS V. MASTRIANO**
GOVERNOR
CARRIE LEWIS DELROSSO
LIEUTENANT GOVERNOR
REPUBLICAN
- MATT HACKENBURG**
GOVERNOR
TIM MCMASTER
LIEUTENANT GOVERNOR
LIBERTARIAN
- CHRISTINA DIGIULIO**
GOVERNOR
MICHAEL BAGDOLINO
LIEUTENANT GOVERNOR
GREEN PARTY
- JOE SOLOS**
GOVERNOR
NICOLE WELTZ
LIEUTENANT GOVERNOR
KEYSTONE

UNITED STATES SENATOR
6 YEAR TERM
VOTE FOR ONE

- JOHN FETTERMAN**
DEMOCRATIC
- MEHMET OZ**
REPUBLICAN
- ERIK GERHARDT**
LIBERTARIAN
- RICHARD L. WEISS**
GREEN PARTY
- DANIEL WASSMER**
KEYSTONE

Write-in

REPRESENTATIVE IN CONGRESS
13TH DISTRICT
2 YEAR TERM
VOTE FOR ONE

JOHN JOYCE
REPUBLICAN

Write-in

REPRESENTATIVE IN THE GENERAL ASSEMBLY
71ST DISTRICT
2 YEAR TERM
VOTE FOR ONE

JIM RIGBY
REPUBLICAN

Write-in

CAMBRIA COUNTY BOARD OF ELECTIONS

Cambria County Board of Elections

[Signature]
[Signature]
[Signature]

WARNING: If you receive an absentee or mail-in ballot and return your voted ballot by the deadline, you may not vote at your polling place on election day. If you are unable to return your voted absentee or mail-in ballot by the deadline, you may only vote a provisional ballot at your polling place on election day, unless you surrender your absentee or mail-in ballot and envelope to the judge of elections to be voided to vote by regular ballot.