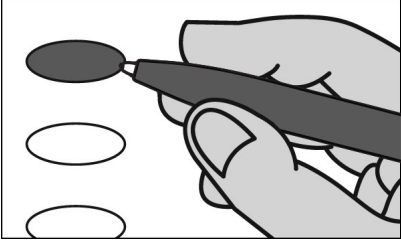


LILLY BOROUGH SECOND WARD

OFFICIAL DEMOCRATIC MUNICIPAL PRIMARY BALLOT
CAMBRIA COUNTY
MAY 16, 2023



INSTRUCTIONS TO VOTER

1. TO VOTE YOU MUST BLACKEN THE OVAL (●) TO THE LEFT OF YOUR CHOICE COMPLETELY. An oval (●) blackened to the left of the name of any candidate indicates a vote for that candidate.
2. To cast a write-in vote for a person whose name is not on the ballot, you must blacken the oval (●) to the left of the line provided, and write the name in the black space provided for that purpose.
3. Mark ballot only in black or blue ink. Use the same pen for all markings you place on the ballot.
4. If you make a mistake DO NOT ERASE OR CROSS OUT. Ask for a new ballot.

JUSTICE OF THE SUPREME COURT
VOTE FOR ONE

- DANIEL MCCAFFERY
PHILADELPHIA COUNTY
- DEBBIE KUNSELMAN
BEAVER COUNTY

Write-in

JUDGE OF THE SUPERIOR COURT
VOTE FOR NOT MORE THAN TWO

- PAT DUGAN
PHILADELPHIA COUNTY
- TIMIKA LANE
PHILADELPHIA COUNTY
- JILL BECK
ALLEGHENY COUNTY

Write-in

Write-in

JUDGE OF THE COMMONWEALTH COURT
VOTE FOR ONE

- MATT WOLF
PHILADELPHIA COUNTY
- BRYAN NEFT
ALLEGHENY COUNTY

Write-in

JUDGE OF THE COMMON PLEAS
47TH JUDICIAL DISTRICT
VOTE FOR NOT MORE THAN TWO

- TONILYN CHIPPIE KARGO
PORTAGE TOWNSHIP
- FORREST B. FORDHAM
RICHLAND TOWNSHIP
- MICHAEL CARBONARA
RICHLAND TOWNSHIP
- BRETT J. SMITH
ADAMS TOWNSHIP
- TIM SLOAN
CAMBRIA TOWNSHIP

Write-in

Write-in

COUNTY COMMISSIONER
4 YEAR TERM
VOTE FOR NOT MORE THAN TWO

- WILLIAM BJ SMITH
ADAMS TOWNSHIP
- THOMAS C. GERNIS
GEISTOWN BOROUGH

Write-in

Write-in

DISBARRED ATTORNEY
4 YEAR TERM
VOTE FOR ONE

Write-in

PROTHONOTARY
4 YEAR TERM
VOTE FOR ONE

Write-in

Write-in

COUNTY CONTROLLER
4 YEAR TERM
VOTE FOR ONE

- ED CERNIC, JR.
WEST TAYLOR TOWNSHIP

Write-in

CLERK OF COURTS
4 YEAR TERM
VOTE FOR ONE

Write-in

Write-in

REGISTER OF WILLS
4 YEAR TERM
VOTE FOR ONE

- SHARON L. BURK
GALLITZIN TOWNSHIP

Write-in

RECORDER OF DEEDS
4 YEAR TERM
VOTE FOR ONE

Write-in

COUNTY TREASURER
4 YEAR TERM
VOTE FOR ONE

Write-in

COUNTY CORONER
4 YEAR TERM
VOTE FOR ONE

Write-in

**TURN PAGE TO
CONTINUE VOTING**
>>>>>

SCHOOL DIRECTOR
PENN CAMBRIA SCHOOL DISTRICT AT LARGE
4 YEAR TERM
VOTE FOR NOT MORE THAN FIVE

- ANTHONY DZIABO
- MICHAEL E. SHEEHAN
- CINDY SHEEHAN-WESTRICK
- GUY MONICA
- JEFF STOHN
- TYLER REAM

Write-in

Write-in

Write-in

Write-in

Write-in

MAYOR
2 YEAR TERM
VOTE FOR ONE

Write-in

TAX COLLECTOR
2 YEAR TERM
VOTE FOR ONE

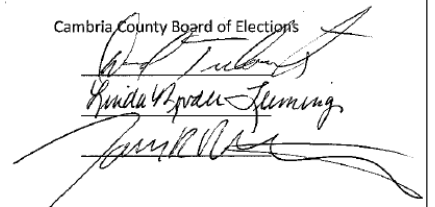
Write-in

SPECIMEN

**YOU HAVE NOW
COMPLETED VOTING**

**CAMBRIA COUNTY
BOARD OF ELECTIONS**

Cambria County Board of Elections



WARNING: If you receive an absentee or mail-in ballot and return your voted ballot by the deadline, you may not vote at your polling place on election day. If you are unable to return your voted absentee or mail-in ballot by the deadline, you may only vote a provisional ballot at your polling place on election day, unless you surrender your absentee or mail-in ballot and envelope to the judge of elections to be voided to vote by regular ballot.