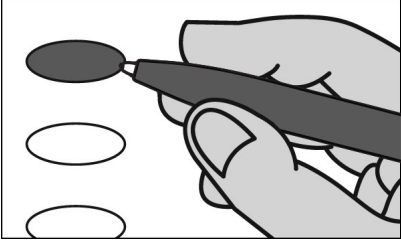


CASSANDRA BOROUGH

**OFFICIAL DEMOCRATIC MUNICIPAL PRIMARY BALLOT
CAMBRIA COUNTY
MAY 16, 2023**



INSTRUCTIONS TO VOTER

1. TO VOTE YOU MUST BLACKEN THE OVAL (●) TO THE LEFT OF YOUR CHOICE COMPLETELY. An oval (●) blackened to the left of the name of any candidate indicates a vote for that candidate.
2. To cast a write-in vote for a person whose name is not on the ballot, you must blacken the oval (●) to the left of the line provided, and write the name in the black space provided for that purpose.
3. Mark ballot only in black or blue ink. Use the same pen for all markings you place on the ballot.
4. If you make a mistake DO NOT ERASE OR CROSS OUT. Ask for a new ballot.

**JUSTICE OF THE SUPREME COURT
VOTE FOR ONE**

- DANIEL MCCAFFERY**
PHILADELPHIA COUNTY
- DEBBIE KUNSELMAN**
BEAVER COUNTY

Write-in

**JUDGE OF THE SUPERIOR COURT
VOTE FOR NOT MORE THAN TWO**

- PAT DUGAN**
PHILADELPHIA COUNTY
- TIMIKA LANE**
PHILADELPHIA COUNTY
- JILL BECK**
ALLEGHENY COUNTY

Write-in

Write-in

**JUDGE OF THE COMMONWEALTH COURT
VOTE FOR ONE**

- MATT WOLF**
PHILADELPHIA COUNTY
- BRYAN NEFT**
ALLEGHENY COUNTY

Write-in

**JUDGE OF THE COMMON PLEAS
47TH JUDICIAL DISTRICT
VOTE FOR NOT MORE THAN TWO**

- TONILYN CHIPPIE KARGO**
PORTAGE TOWNSHIP
- FORREST B. FORDHAM**
RICHLAND TOWNSHIP
- MICHAEL CARBONARA**
RICHLAND TOWNSHIP
- BRETT J. SMITH**
ADAMS TOWNSHIP
- TIM SLOAN**
CAMBRIA TOWNSHIP

Write-in

Write-in

**COUNTY COMMISSIONER
4 YEAR TERM
VOTE FOR NOT MORE THAN TWO**

- WILLIAM BJ SMITH**
ADAMS TOWNSHIP
- THOMAS C. GERNIS**
GEISTOWN BOROUGH

Write-in

Write-in

**DISPUTES ATTORNEY
4 YEAR TERM
VOTE FOR ONE**

Write-in

**PROTHONOTARY
4 YEAR TERM
VOTE FOR ONE**

Write-in

Write-in

**COUNTY CONTROLLER
4 YEAR TERM
VOTE FOR ONE**

- ED CERNIC, JR.**
WEST TAYLOR TOWNSHIP

Write-in

**CLERK OF COURTS
4 YEAR TERM
VOTE FOR ONE**

Write-in

Write-in

**REGISTER OF WILLS
4 YEAR TERM
VOTE FOR ONE**

- SHARON L. BURK**
GALLITZIN TOWNSHIP

Write-in

**RECORDER OF DEEDS
4 YEAR TERM
VOTE FOR ONE**

Write-in

**COUNTY TREASURER
4 YEAR TERM
VOTE FOR ONE**

Write-in

**COUNTY CORONER
4 YEAR TERM
VOTE FOR ONE**

Write-in

**TURN PAGE TO
CONTINUE VOTING
>>>>>**

SCHOOL DIRECTOR
PORTAGE AREA SCHOOL DISTRICT AT LARGE
4 YEAR TERM
VOTE FOR NOT MORE THAN FIVE

- KATHY HOUGH
- GARY GOUSE
- NANCY L. SHERBINE
- BRIAN SHOPE
- SUSAN BERARDINELLI
- JACOB MYERS
- DINO SCARTON

Write-in

Write-in

Write-in

Write-in

Write-in

COUNCIL
4 YEAR TERM
VOTE FOR NOT MORE THAN THREE

- DORIS MERLINI

Write-in

Write-in

Write-in

TAX COLLECTOR
2 YEAR TERM
VOTE FOR ONE

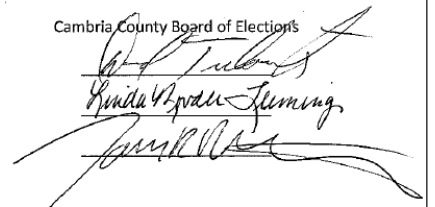
Write-in

SPECIMEN

**YOU HAVE NOW
COMPLETED VOTING**

**CAMBRIA COUNTY
BOARD OF ELECTIONS**

Cambria County Board of Elections



WARNING: If you receive an absentee or mail-in ballot and return your voted ballot by the deadline, you may not vote at your polling place on election day. If you are unable to return your voted absentee or mail-in ballot by the deadline, you may only vote a provisional ballot at your polling place on election day, unless you surrender your absentee or mail-in ballot and envelope to the judge of elections to be voided to vote by regular ballot.