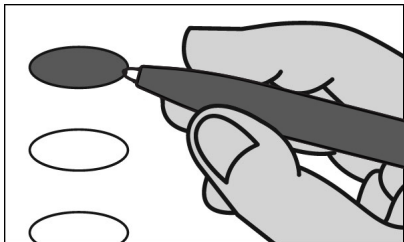


**ALLEGHENY TOWNSHIP**

**OFFICIAL DEMOCRATIC MUNICIPAL PRIMARY BALLOT  
CAMBRIA COUNTY  
MAY 16, 2023**



**INSTRUCTIONS TO VOTER**

1. TO VOTE YOU MUST BLACKEN THE OVAL (●) TO THE LEFT OF YOUR CHOICE COMPLETELY. An oval (●) blackened to the left of the name of any candidate indicates a vote for that candidate.
2. To cast a write-in vote for a person whose name is not on the ballot, you must blacken the oval (●) to the left of the line provided, and write the name in the black space provided for that purpose.
3. Mark ballot only in black or blue ink. Use the same pen for all markings you place on the ballot.
4. If you make a mistake DO NOT ERASE OR CROSS OUT. Ask for a new ballot.

**JUSTICE OF THE SUPREME COURT  
VOTE FOR ONE**

- DANIEL MCCAFFERY**  
PHILADELPHIA COUNTY
- DEBBIE KUNSELMAN**  
BEAVER COUNTY

Write-in

**JUDGE OF THE SUPERIOR COURT  
VOTE FOR NOT MORE THAN TWO**

- PAT DUGAN**  
PHILADELPHIA COUNTY
- TIMIKA LANE**  
PHILADELPHIA COUNTY
- JILL BECK**  
ALLEGHENY COUNTY

Write-in

Write-in

**JUDGE OF THE COMMONWEALTH COURT  
VOTE FOR ONE**

- MATT WOLF**  
PHILADELPHIA COUNTY
- BRYAN NEFT**  
ALLEGHENY COUNTY

Write-in

**JUDGE OF THE COMMON PLEAS  
47TH JUDICIAL DISTRICT  
VOTE FOR NOT MORE THAN TWO**

- TONILYN CHIPPIE KARGO**  
PORTAGE TOWNSHIP
- FORREST B. FORDHAM**  
RICHLAND TOWNSHIP
- MICHAEL CARBONARA**  
RICHLAND TOWNSHIP
- BRETT J. SMITH**  
ADAMS TOWNSHIP
- TIM SLOAN**  
CAMBRIA TOWNSHIP

Write-in

Write-in

**COUNTY COMMISSIONER  
4 YEAR TERM  
VOTE FOR NOT MORE THAN**

- WILLIAM BJ SMITH**  
ADAMS TOWNSHIP
- THOMAS C. GERNIS**  
GEISTOWN BOROUGH

Write-in

Write-in

**DISBARRED ATTORNEY  
4 YEAR TERM  
VOTE FOR ONE**

Write-in

**PROTHONOTARY  
4 YEAR TERM  
VOTE FOR ONE**

Write-in

Write-in

**COUNTY CONTROLLER  
4 YEAR TERM  
VOTE FOR ONE**

- ED CERNIC, JR.**  
WEST TAYLOR TOWNSHIP

Write-in

**CLERK OF COURTS  
4 YEAR TERM  
VOTE FOR ONE**

Write-in

Write-in

**REGISTER OF WILLS  
4 YEAR TERM  
VOTE FOR ONE**

- SHARON L. BURK**  
GALLITZIN TOWNSHIP

Write-in

**RECORDER OF DEEDS  
4 YEAR TERM  
VOTE FOR ONE**

Write-in

**COUNTY TREASURER  
4 YEAR TERM  
VOTE FOR ONE**

Write-in

**COUNTY CORONER  
4 YEAR TERM  
VOTE FOR ONE**

Write-in

Write-in

**TURN PAGE TO  
CONTINUE VOTING  
>>>>>**

**SCHOOL DIRECTOR**  
PENN CAMBRIA SCHOOL DISTRICT AT LARGE  
4 YEAR TERM  
VOTE FOR NOT MORE THAN FIVE

- ANTHONY DZIABO
- MICHAEL E. SHEEHAN
- CINDY SHEEHAN-WESTRICK
- GUY MONICA
- JEFF STOHN
- TYLER REAM

\_\_\_\_\_

Write-in

\_\_\_\_\_

Write-in

\_\_\_\_\_

Write-in

\_\_\_\_\_

Write-in

\_\_\_\_\_

Write-in

**SUPERVISOR**  
6 YEAR TERM  
VOTE FOR ONE

\_\_\_\_\_

Write-in

**TAX COLLECTOR**  
2 YEAR TERM  
VOTE FOR ONE

\_\_\_\_\_

Write-in

**AUDITOR**  
6 YEAR TERM  
VOTE FOR ONE

\_\_\_\_\_

Write-in

**AUDITOR**  
4 YEAR TERM  
VOTE FOR ONE

\_\_\_\_\_

Write-in

**AUDITOR**  
2 YEAR TERM  
VOTE FOR ONE

\_\_\_\_\_

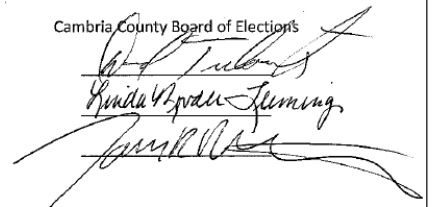
Write-in

SPECIMEN

**YOU HAVE NOW  
COMPLETED VOTING**

**CAMBRIA COUNTY  
BOARD OF ELECTIONS**

Cambria County Board of Elections



**WARNING:** If you receive an absentee or mail-in ballot and return your voted ballot by the deadline, you may not vote at your polling place on election day. If you are unable to return your voted absentee or mail-in ballot by the deadline, you may only vote a provisional ballot at your polling place on election day, unless you surrender your absentee or mail-in ballot and envelope to the judge of elections to be voided to vote by regular ballot.