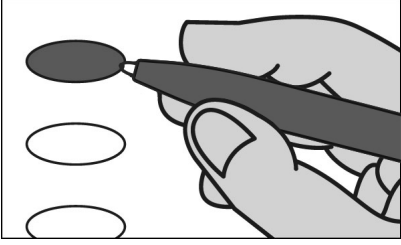


**NANTY GLO BOROUGH SECOND WARD
OFFICIAL MUNICIPAL ELECTION BALLOT
CAMBRIA COUNTY
NOVEMBER 7, 2023**



INSTRUCTIONS TO VOTER

1. TO VOTE YOU MUST BLACKEN THE OVAL (●) TO THE LEFT OF YOUR CHOICE COMPLETELY. An oval (●) blackened to the left of the name of any candidate indicates a vote for that candidate.
2. To cast a write-in vote for a person whose name is not on the ballot, you must blacken the oval (●) to the left of the line provided, and write the name in the blank space provided for that purpose.
3. Mark ballot only in black or blue ink. Use the same pen for all markings you place on the ballot.
4. If you make a mistake DO NOT ERASE OR CROSS OUT. Ask for a new ballot.

**JUSTICE OF THE SUPREME COURT
VOTE FOR ONE**

- DANIEL MCCAFFERY**
DEMOCRATIC
- CAROLYN CARLUCCIO**
REPUBLICAN
- _____
Write-in

**JUDGE OF THE SUPERIOR COURT
VOTE FOR NOT MORE THAN TWO**

- JILL BECK**
DEMOCRATIC
- TIMIKA LANE**
DEMOCRATIC
- MARIA BATTISTA**
REPUBLICAN
- HARRY F. SMAIL, JR.**
REPUBLICAN
- _____
Write-in
- _____
Write-in

**JUDGE OF THE COMMONWEALTH COURT
VOTE FOR ONE**

- MATT WOLF**
DEMOCRATIC
- MEGAN MARTIN**
REPUBLICAN
- _____
Write-in

**JUDGE OF THE COURT OF COMMON PLEAS
47TH JUDICIAL DISTRICT
VOTE FOR NOT MORE THAN TWO**

- TIM SLOAN**
DEMOCRATIC
- MICHAEL CARBONARA**
DEMOCRATIC/REPUBLICAN
- FORREST B. FORDHAM**
REPUBLICAN
- _____
Write-in
- _____
Write-in

**COUNTY COMMISSIONER
4 YEAR TERM
VOTE FOR NOT MORE THAN TWO**

- THOMAS C. CHERNISKY**
DEMOCRATIC
- WILLIAM BJ SMITH**
DEMOCRATIC
- SCOTT W. HUNT**
REPUBLICAN
- KEITH RAGER**
REPUBLICAN
- _____
Write-in
- _____
Write-in

**DISTRICT ATTORNEY
4 YEAR TERM
VOTE FOR ONE**

- GREG NEUGEBAUER**
DEMOCRATIC/REPUBLICAN
- _____
Write-in

**PROTHONOTARY
4 YEAR TERM
VOTE FOR ONE**

- LISA PUDLINER CRYNOCK**
REPUBLICAN
- _____
Write-in

**COUNTY CONTROLLER
4 YEAR TERM
VOTE FOR ONE**

- ED CERNIC, JR.**
DEMOCRATIC
- _____
Write-in

**CLERK OF COURTS
4 YEAR TERM
VOTE FOR ONE**

- MAX R. PAVLOVICH**
REPUBLICAN
- _____
Write-in

**REGISTER OF WILLS
4 YEAR TERM
VOTE FOR ONE**

- SHARON L. BURK**
DEMOCRATIC
- CINDY PERRONE**
REPUBLICAN
- _____
Write-in

**RECORDER OF DEEDS
4 YEAR TERM
VOTE FOR ONE**

- FAYLYNN HALL**
DEMOCRATIC
- MELISSA KIMLA**
REPUBLICAN
- _____
Write-in

**COUNTY TREASURER
4 YEAR TERM
VOTE FOR ONE**

- LISA KOZOROSKY**
DEMOCRATIC/REPUBLICAN
- _____
Write-in

**COUNTY CORONER
4 YEAR TERM
VOTE FOR ONE**

- JEFFREY LEES**
DEMOCRATIC/REPUBLICAN
- _____
Write-in

**TURN PAGE TO
CONTINUE VOTING
>>>>>**

SCHOOL DIRECTOR
BLACKLICK VALLEY SCHOOL DISTRICT REGION 3
4 YEAR TERM
VOTE FOR NOT MORE THAN TWO

- DONALD E. THOMAS**
DEMOCRATIC/REPUBLICAN
-
- _____
Write-in
-
- _____
Write-in

SCHOOL DIRECTOR
BLACKLICK VALLEY SCHOOL DISTRICT REGION 3
2 YEAR TERM
VOTE FOR ONE

- JEFFREY A. SZYMUSIAK**
REPUBLICAN
-
- _____
Write-in

COUNCIL
4 YEAR TERM
VOTE FOR NOT MORE THAN TWO

- WILLIAM DUNCHUCK**
DEMOCRATIC
-
- _____
Write-in
-
- _____
Write-in

INSTRUCTIONS TO VOTER

1. A blackened oval (●) to the left of the word "YES" indicates a vote FOR the Retention.
2. A blackened oval (●) to the left of the word "NO" indicates a vote AGAINST the Retention.
3. Mark ballot only in black lead pencil, or blue, black ink. Use the same pencil or pen for all markings you place on the ballot.

OFFICIAL RETENTION QUESTIONS

SUPERIOR COURT RETENTION ELECTION QUESTION

Shall JACK PAMELA be retained for an additional term as Judge of the Superior Court of the Commonwealth of Pennsylvania?

- YES
- NO

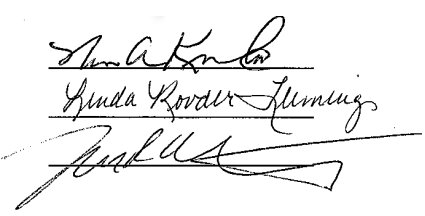
SUPERIOR COURT RETENTION ELECTION QUESTION

Shall VICTOR P. STABILE be retained for an additional term as Judge of the Superior Court of the Commonwealth of Pennsylvania?

- YES
- NO

YOU HAVE NOW COMPLETED VOTING

CAMBRIA COUNTY
BOARD OF ELECTIONS



WARNING: If you receive an absentee or mail-in ballot and return your voted ballot by the deadline, you may not vote at your polling place on election day. If you are unable to return your voted absentee or mail-in ballot by the deadline, you may only vote a provisional ballot at your polling place on election day, unless you surrender your absentee or mail-in ballot and envelope to the judge of elections to be voided to vote by regular ballot.

SPECIMEN