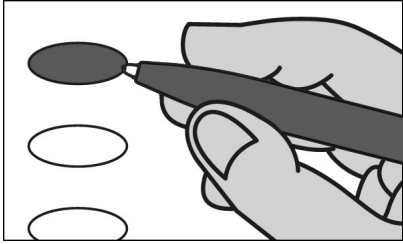


**UPPER YODER TOWNSHIP NO.1  
OFFICIAL MUNICIPAL ELECTION BALLOT  
CAMBRIA COUNTY  
NOVEMBER 7, 2023**



**INSTRUCTIONS TO VOTER**

1. TO VOTE YOU MUST BLACKEN THE OVAL (●) TO THE LEFT OF YOUR CHOICE COMPLETELY. An oval (●) blackened to the left of the name of any candidate indicates a vote for that candidate.
2. To cast a write-in vote for a person whose name is not on the ballot, you must blacken the oval (●) to the left of the line provided, and write the name in the blank space provided for that purpose.
3. Mark ballot only in black or blue ink. Use the same pen for all markings you place on the ballot.
4. If you make a mistake DO NOT ERASE OR CROSS OUT. Ask for a new ballot.

**JUSTICE OF THE SUPREME COURT  
VOTE FOR ONE**

- DANIEL MCCAFFERY**  
DEMOCRATIC
- CAROLYN CARLUCCIO**  
REPUBLICAN
- \_\_\_\_\_  
Write-in

**JUDGE OF THE SUPERIOR COURT  
VOTE FOR NOT MORE THAN TWO**

- JILL BECK**  
DEMOCRATIC
- TIMIKA LANE**  
DEMOCRATIC
- MARIA BATTISTA**  
REPUBLICAN
- HARRY F. SMAIL, JR.**  
REPUBLICAN
- \_\_\_\_\_  
Write-in
- \_\_\_\_\_  
Write-in

**JUDGE OF THE COMMONWEALTH COURT  
VOTE FOR ONE**

- MATT WOLF**  
DEMOCRATIC
- MEGAN MARTIN**  
REPUBLICAN
- \_\_\_\_\_  
Write-in

**JUDGE OF THE COURT OF COMMON PLEAS  
47TH JUDICIAL DISTRICT  
VOTE FOR NOT MORE THAN TWO**

- TIM SLOAN**  
DEMOCRATIC
- MICHAEL CARBONARA**  
DEMOCRATIC/REPUBLICAN
- FORREST B. FORDHAM**  
REPUBLICAN
- \_\_\_\_\_  
Write-in
- \_\_\_\_\_  
Write-in

**COUNTY COMMISSIONER  
4 YEAR TERM  
VOTE FOR NOT MORE THAN TWO**

- THOMAS C. CHERNISKY**  
DEMOCRATIC
- WILLIAM BJ SMITH**  
DEMOCRATIC
- SCOTT W. HUNT**  
REPUBLICAN
- KEITH RAGER**  
REPUBLICAN
- \_\_\_\_\_  
Write-in
- \_\_\_\_\_  
Write-in

**DISTRICT ATTORNEY  
4 YEAR TERM  
VOTE FOR ONE**

- GREG NEUGEBAUER**  
DEMOCRATIC/REPUBLICAN
- \_\_\_\_\_  
Write-in

**PROTHONOTARY  
4 YEAR TERM  
VOTE FOR ONE**

- LISA PUDLINER CRYNOCK**  
REPUBLICAN
- \_\_\_\_\_  
Write-in

**COUNTY CONTROLLER  
4 YEAR TERM  
VOTE FOR ONE**

- ED CERNIC, JR.**  
DEMOCRATIC
- \_\_\_\_\_  
Write-in

**CLERK OF COURTS  
4 YEAR TERM  
VOTE FOR ONE**

- MAX R. PAVLOVICH**  
REPUBLICAN
- \_\_\_\_\_  
Write-in

**REGISTER OF WILLS  
4 YEAR TERM  
VOTE FOR ONE**

- SHARON L. BURK**  
DEMOCRATIC
- CINDY PERRONE**  
REPUBLICAN
- \_\_\_\_\_  
Write-in

**RECORDER OF DEEDS  
4 YEAR TERM  
VOTE FOR ONE**

- FAYLYNN HALL**  
DEMOCRATIC
- MELISSA KIMLA**  
REPUBLICAN
- \_\_\_\_\_  
Write-in

**COUNTY TREASURER  
4 YEAR TERM  
VOTE FOR ONE**

- LISA KOZOROSKY**  
DEMOCRATIC/REPUBLICAN
- \_\_\_\_\_  
Write-in

**COUNTY CORONER  
4 YEAR TERM  
VOTE FOR ONE**

- JEFFREY LEES**  
DEMOCRATIC/REPUBLICAN
- \_\_\_\_\_  
Write-in

**TURN PAGE TO  
CONTINUE VOTING  
>>>>>**

<p><b>MAGISTERIAL DISTRICT JUDGE</b> 47-1-02 6 YEAR TERM VOTE FOR ONE</p>	<p><b>SUPERVISOR</b> 2 YEAR TERM VOTE FOR ONE</p>	<p><b>INSTRUCTIONS TO VOTER</b></p> <p>1. A blackened oval (●) to the left of the word "YES" indicates a vote FOR the Retention.</p> <p>2. A blackened oval (●) to the left of the word "NO" indicates a vote AGAINST the Retention.</p> <p>3. Mark ballot only in black lead pencil, or blue, black ink. Use the same pencil or pen for all markings you place on the ballot.</p>
<p><input type="radio"/> <b>SUSAN GINDLESBERGER</b> DEMOCRATIC/REPUBLICAN</p> <p><input type="radio"/></p> <p>Write-in _____</p>	<p><input type="radio"/> <b>SUE KONVOLINKA</b> DEMOCRATIC/REPUBLICAN</p> <p><input type="radio"/></p> <p>Write-in _____</p>	<p><b>OFFICIAL RETENTION QUESTIONS</b></p>
<p><b>SCHOOL DIRECTOR</b> WESTMONT HILLTOP SCHOOL DISTRICT AT LARGE 4 YEAR TERM VOTE FOR NOT MORE THAN FIVE</p>	<p><b>AUDITOR</b> 6 YEAR TERM VOTE FOR ONE</p> <p><input type="radio"/></p> <p>Write-in _____</p>	<p><b>SUPERIOR COURT RETENTION ELECTION QUESTION</b></p> <p>Shall JACK PAMELLA be retained for an additional term as Judge of the Superior Court of the Commonwealth of Pennsylvania?</p> <p><input type="radio"/> YES</p> <p><input type="radio"/> NO</p>
<p><input type="radio"/> <b>JOHN MESSINA</b> DEMOCRATIC/REPUBLICAN</p> <p><input type="radio"/> <b>WILLIAM M. CARNEY</b> DEMOCRATIC/REPUBLICAN</p> <p><input type="radio"/> <b>KAMAL GELLA</b> DEMOCRATIC/REPUBLICAN</p> <p><input type="radio"/> <b>JULIE RICE</b> DEMOCRATIC</p> <p><input type="radio"/> <b>JOSEPH NIBERT</b> DEMOCRATIC/REPUBLICAN</p> <p><input type="radio"/> <b>ROBERT A. GLEASON, JR.</b> REPUBLICAN</p> <p><input type="radio"/></p> <p>Write-in _____</p> <p><input type="radio"/></p> <p>Write-in _____</p> <p><input type="radio"/></p> <p>Write-in _____</p> <p><input type="radio"/></p> <p>Write-in _____</p> <p><input type="radio"/></p> <p>Write-in _____</p>	<p><b>SUPERIOR COURT RETENTION ELECTION QUESTION</b></p> <p>Shall VICTOR P. STABILE be retained for an additional term as Judge of the Superior Court of the Commonwealth of Pennsylvania?</p> <p><input type="radio"/> YES</p> <p><input type="radio"/> NO</p>	<p><b>SUPERIOR COURT RETENTION ELECTION QUESTION</b></p> <p>Shall VICTOR P. STABILE be retained for an additional term as Judge of the Superior Court of the Commonwealth of Pennsylvania?</p> <p><input type="radio"/> YES</p> <p><input type="radio"/> NO</p>
<p><b>SCHOOL DIRECTOR</b> WESTMONT HILLTOP SCHOOL DISTRICT AT LARGE 2 YEAR TERM VOTE FOR ONE</p>	<p><b>SUPERVISOR</b> 6 YEAR TERM VOTE FOR NOT MORE THAN TWO</p>	<p><b>YOU HAVE NOW COMPLETED VOTING</b></p> <p><b><u>CAMBRIA COUNTY</u></b> <b><u>BOARD OF ELECTIONS</u></b></p> <p><i>[Signatures]</i></p>
<p><input type="radio"/> <b>KENNETH S. SALEM</b> REPUBLICAN</p> <p><input type="radio"/></p> <p>Write-in _____</p>	<p><input type="radio"/> <b>SUE KONVOLINKA</b> DEMOCRATIC/REPUBLICAN</p> <p><input type="radio"/> <b>KYLE SHAFFER</b> DEMOCRATIC/REPUBLICAN</p> <p><input type="radio"/></p> <p>Write-in _____</p> <p><input type="radio"/></p> <p>Write-in _____</p>	<p><b>WARNING:</b> If you receive an absentee or mail-in ballot and return your voted ballot by the deadline, you may not vote at your polling place on election day. If you are unable to return your voted absentee or mail-in ballot by the deadline, you may only vote a provisional ballot at your polling place on election day, unless you surrender your absentee or mail-in ballot and envelope to the judge of elections to be voided to vote by regular ballot.</p>

SPECIMEN