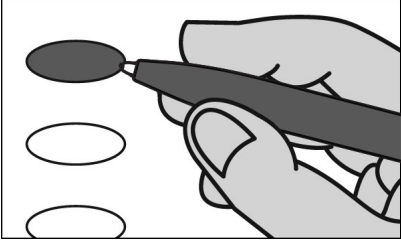


**LILLY BOROUGH SECOND WARD
OFFICIAL REPUBLICAN PRIMARY BALLOT
CAMBRIA COUNTY
APRIL 23, 2024**



INSTRUCTIONS TO VOTER

1. TO VOTE YOU MUST BLACKEN THE OVAL (●) TO THE LEFT OF YOUR CHOICE COMPLETELY. An oval (●) blackened to the left of the name of any candidate indicates a vote for that candidate.
2. To cast a write-in vote for a person whose name is not on the ballot, you must blacken the oval (●) to the left of the line provided, and write the name in the blank space provided for that purpose.
3. Mark ballot only in black or blue ink. Use the same pen for all markings you place on the ballot.
4. If you make a mistake DO NOT ERASE OR CROSS OUT. Ask for a new ballot.

**PRESIDENT OF THE UNITED STATES
VOTE FOR ONE**

- NIKKI R. HALEY
- DONALD J. TRUMP
- Write-in _____

**UNITED STATES SENATOR
VOTE FOR ONE**

- DAVE MCCORMICK
ALLEY COUNTY
- Write-in _____

**ATTORNEY GENERAL
VOTE FOR ONE**

- DAVE SUNDAY
YORK COUNTY
- CRAIG WILLIAMS
DELAWARE COUNTY
- Write-in _____

**AUDITOR GENERAL
VOTE FOR ONE**

- TIM DEFOOR
DAUPHIN COUNTY
- Write-in _____

**STATE TREASURER
VOTE FOR ONE**

- STACY GARRITY
BRADFORD COUNTY
- Write-in _____

**REPRESENTATIVE IN CONGRESS
13TH DISTRICT
VOTE FOR ONE**

- JOHN JOYCE
BLAIR COUNTY
- Write-in _____

**SENATOR IN THE GENERAL
ASSEMBLY
35TH DISTRICT
VOTE FOR ONE**

- WAYNE LANGERHOLC, JR.
RICHLAND TOWNSHIP
- Write-in _____

**REPRESENTATIVE IN THE GENERAL
ASSEMBLY
71ST DISTRICT
VOTE FOR ONE**

- JIM RIGBY
FERNDALE BOROUGH
- Write-in _____

**DELEGATE TO THE REPUBLICAN
NATIONAL CONVENTION
13TH DISTRICT
VOTE FOR NOT MORE THAN THREE**

- ERICH E. HAWBAKER
- BILL WARD, JR.
- C. ARNOLD
- STEVEN CARROLL, JR.
- JUANITA MILLER
- JIM FREEMAN
- JIM WASILKO
- Write-in _____

**ALTERNATE DELEGATE TO THE
REPUBLICAN NATIONAL
CONVENTION
13TH DISTRICT
VOTE FOR NOT MORE THAN THREE**

- LINDA L. MCCLURE
- JUDY WARD
- Write-in _____
- Write-in _____
- Write-in _____

**YOU HAVE NOW COMPLETED
VOTING**

**CAMBRIA COUNTY BOARD OF
ELECTIONS**

Scott W. H. J.
Kevin Kager

WARNING

If you receive an absentee or mail-in ballot and return your voted ballot by the deadline, you may not vote at your polling place on election day. If you are unable to return your voted absentee or mail-in ballot by the deadline, you may only vote a provisional ballot at your polling place on election day, unless you surrender your absentee or mail-in ballot and envelope to the judge of elections to be voided to vote by regular ballot.